

Holiday Inn Colchester



[View the Access Guide](#)

Abbotts Lane, Eight Ash Green, Colchester, Essex CO6 3QL

01206 363 400

www.ihg.com/holidayinn/hotels/gb/en/colchester/stnco/hoteldetail (<https://www.ihg.com/holidayinn/hotels/gb/en/colchester/stnco/hoteldetail>)

Guide Last Updated: 13/02/2018

[Something changed? \(/contact/something_changed?destination=/access-guide/kew-green/holiday-inn-colchester\)](#)



Google

(<https://maps.google.com/maps?ll=51.892708,0.823886&z=14&t=m&hl=en-US&q=US&mapclient=apiv3>)

Map data ©2018 Google

Access Guide



[Explain these icons \(/our-icons\)](#)

[Expand all](#) [Collapse all](#)

Hotel Introduction

[Collapse -](#)

Related Access Guide(s)

[Collapse -](#)

- [For the Holiday Inn Colchester - Leisure Facilities DisabledGo access guide please click here \(new tab\) \(https://www.disabledgo.com/access-guide/kew-green/holiday-inn-colchester-leisure-facilities\).](https://www.disabledgo.com/access-guide/kew-green/holiday-inn-colchester-leisure-facilities)

Hotel Information

[Collapse -](#)

- The hotel has its own parking facilities.
- This hotel has its own restaurant located on the ground floor.
- Conference/meeting facilities are available.
- The conference/meeting facilities are located on the ground floor.

Room Information

[Collapse -](#)

- The hotel has 110 rooms in total.

- There is an/are accessible room(s) within the hotel.
- The accessible room(s) is/are located on the ground floor.
- The hotel has 2 accessible room(s) with accessible ensuite facilities.
- There is/are 2 accessible room(s) with a bath.
- There is an/are adjoining room(s) available for the accessible room(s).
- The accessible rooms are 43m - 48m from the hotel entrance.
- There is a/are standard room(s) available on the ground floor.
- There is an/are adjoining room(s) available for the standard room(s).
- Rooms on other floors are accessed via stairs.
- Bed raisers are not available on request.
- Bath mats are available on request.
- All televisions have subtitles available.

Getting Here

Collapse -

By Road

Collapse -

- The hotel is located just off the A12.
- This hotel has a car park which is free for all users.

By Bus

Collapse -

- There is a bus stop within 150 metres of the hotel.
- There are several bus routes which stop on Halstead Road close to the hotel. These routes are 82A/82B/83/83A/83B/88/88A/88B and 716.
- [For more information on Metro Transit please click here \(opens new tab\) \(http://www.metrotransit.co/?utm_source=adcenter&utm_medium=cpc&utm_term=colchester%20bus%20times&utm_network=o&utm_campaign=BusCities&location=UK\)](http://www.metrotransit.co/?utm_source=adcenter&utm_medium=cpc&utm_term=colchester%20bus%20times&utm_network=o&utm_campaign=BusCities&location=UK).

By Train

Collapse -

- The nearest Railway Station is Marks Tey.
- Marks Tey Station is in the Centre of Colchester and is approximately 3 miles from the Hotel. There are several bus and taxis routes available from the station to the hotel.
- [For more information on National Rail please click here \(opens new tab\) \(http://www.nationalrail.co.uk/stations_destinations/MKT.aspx\)](http://www.nationalrail.co.uk/stations_destinations/MKT.aspx).

Getting Help and Assistance

Collapse -

- There is a member of staff available for help and assistance.
- Staff receive disability awareness/equality training.
- Staff do not receive deaf awareness training.
- There is not a member of staff trained in British Sign Language.
- British Sign Language interpreters cannot be provided on request.
- The alternative formats documents can be provided in include; large print on request and different languages on request.
- There is an assistance dog toilet or toileting area at the venue/near by.
- The assistance dog toilet or toileting area is located on the grassed areas in the car park.
- Water bowls for assistance dogs are available.
- There are not mobility aids available.

Parking (Hotel)

Collapse -

Parking

Collapse -

- The hotel does have its own parking facilities.
- The car park is located at the front of the hotel.
- The car park type is open air/surface.
- The car park does not have a height restriction barrier.
- The car park does not have a barrier control system.
- The car park surface is tarmac.
- There is a/are Blue Badge parking bay(s) available.
- The Blue Badge bay(s) markings are faded.
- There is/are 3 designated Blue Badge parking bay(s) within the car park.
- The dimensions of the designated Blue Badge parking bay(s) surveyed are 395cm x 590cm (12ft 12in x 19ft 4in).
- There is a 120cm hatched zone around the Blue Badge parking bay(s).
- Parking spaces for Blue Badge holders do not need to be booked in advance.
- Clearly marked/signposted parent and child parking bays are not available.
- All parking spaces are provided on a first come first served basis.
- There is an additional car park for visitors.
- There is a car park outside the leisure facilities.

Paying

Collapse -

- There are not parking charges for the car park.

Access from the Car Park

Collapse -

- The route from the car park to the entrance is accessible to a wheelchair user with assistance.
- Assistance may be required because there is/are dropped kerbs.
- The entrance is clearly visible from the car park.
- The surface on the approach to the entrance is tarmac and concrete tiles.
- There is a road to cross between the car park and the entrance.
- There is tactile paving on dropped kerbs between the car park and the entrance.
- The nearest designated Blue Badge parking bay is approximately 49m (53yd 1ft) from the hotel entrance.

Drop-off Point(s)

Collapse -

- There is not a/are not clearly marked drop-off point(s).



1



2



3



4



5

Parking (Leisure Facilities)

Collapse -

Parking

Collapse -

- The venue does have its own parking facilities.
- The car park is located at the front of the leisure facilities.
- The car park type is open air/surface.
- The car park does not have a height restriction barrier.
- The car park does not have a barrier control system.
- The car park surface is tarmac.
- There is a/are Blue Badge parking bay(s) available.
- The Blue Badge bay(s) is/are clearly marked.
- There is/are 2 designated Blue Badge parking bay(s) within the car park.
- The dimensions of the designated Blue Badge parking bay(s) surveyed are 380cm x 595cm (12ft 6in x 19ft 6in).
- There is a 120cm hatched zone around the Blue Badge parking bay(s).
- Parking spaces for Blue Badge holders do not need to be booked in advance.
- Clearly marked/signposted parent and child parking bays are not available.
- All parking spaces are provided on a first come first served basis.
- There is an additional car park for visitors.
- There is parking available in the hotel main car park.

Paying

Collapse -

- There are not parking charges for the car park.

Access from the Car Park

Collapse -

- The route from the car park to the entrance is accessible to a wheelchair user with assistance.
- Assistance may be required because there is/are dropped kerbs.
- The entrance is clearly visible from the car park.
- The surface on the approach to the entrance is tarmac.
- There is not a road to cross between the car park and the entrance.
- There is tactile paving on dropped kerbs between the car park and the entrance.
- The nearest designated Blue Badge parking bay is approximately 15m (16yd 1ft) from the leisure facilities entrance.

Drop-off Point(s)

Collapse -

- There is not a/are not clearly marked drop-off point(s).



1



2



3



4

Outside Access (Hotel Entrance)

Collapse -

Entrance

Collapse -

- This information is for the entrance located at the front of the hotel.
- The entrance area/door is clearly signed.
- There is step-free access at this entrance.
- There is a canopy or recess which provides weather protection at this entrance.
- The entrance door(s) does not/do not contrast visually with its immediate surroundings.
- The bell/buzzer is not in a suitable position to allow wheelchair users to gain access.
- The height of the bell/buzzer is 110cm (3ft 7in).
- The main door(s) open(s) automatically (towards you).
- The door(s) is/are double width.
- The width of the door opening is 165cm.
- There is a second set of doors.
- The door(s) open(s) automatically (towards you).
- The door(s) is/are double width.
- The width of the door opening is 162cm.
- There are bollards at this entrance.
- The minimum width between the bollards is 133cm.
- There is a member of staff available for assistance at this entrance.
- There is a slope with a very easy incline.



1



2



3



4



5



6

Reception

Collapse -

Reception

Collapse -

- The reception point is located to the left as you enter via the hotel entrance.
- The reception point is approximately 9m (9yd 2ft) from the hotel entrance.
- The reception area/desk is clearly visible from the entrance.
- There is step-free access to the reception point.
- There is a clear unobstructed route to the reception point.
- There are no windows, TVs, glazed screens or mirrors behind the reception point which could adversely affect the ability of someone to lip read.
- The reception counter is not placed in front of a background which is patterned.
- The lighting levels at the reception point are good.
- The height of the reception counter is high (110cm+).
- There is sufficient space to write or sign documents on the counter.
- There is not a lowered section of the counter.
- The counter is staffed.
- There is not a bell to attract attention.
- Clipboards can be provided to anyone who is unable to use the desk.
- There is a hearing assistance system at the reception point.
- The type of system is a fixed loop.

- The hearing assistance system is signed.
- Staff are trained to use the system.
- Signs and universally accepted symbols or pictograms, indicating lifts, stairs, WCs, circulation routes and other parts of the building are not provided in the reception area.
- The type of flooring in the reception area is carpet and concrete tiles.

Reception Waiting Area

Collapse -

- There is a waiting area close to the reception point.
- Access to the waiting area is unobstructed.
- There is a mixture of seating with and without armrests.
- There is sufficient space for a wheelchair user to use the waiting area.



1



2



3



4

Getting Around

Collapse -

Access

Collapse -

- There is step-free access throughout the majority of the building.
- There is a steep ramp, with handrails on both sides, for access to leisure facilities.
- The width of the ramp/slope is 144cm (4ft 9in).
- This slope is shown in photographs 4 and 5.
- There is/are 3 clearly marked step(s), with handrails on both sides, for access to the main restaurant seating area.
- The height of the step(s) is/are between the recommended 15cm and 18cm.
- The going of the step(s) is/are between the recommended 30cm and 45cm.
- These steps are shown in photographs 6 and 7.
- There is/are 2 clearly marked step(s), with handrails on both sides, for access to the main restaurant seating area.
- The height of the step(s) is/are between the recommended 15cm and 18cm.
- The going of the step(s) is/are between the recommended 30cm and 45cm.
- These steps are shown in photographs 7 and 8.

Circulation

Collapse -

- There are doors in corridors/walkways which have to be opened manually.
- The type of flooring in corridors/walkways is carpet, stone and wood.
- There is some flooring in corridors/walkways which includes patterns or colours which could be confusing or look like steps or holes to some people.
- There is some flooring in corridors/walkways which is shiny and could cause issues with glare or look slippery to some people.
- There is good colour contrast between the walls and floor in the majority of corridors/walkways.
- The lighting levels are good.
- Access to other floors/levels is via stairs.

Signage

Collapse -

- Wayfinding signage is provided.

- The colour, design and typeface of signs is consistent throughout the building.

Audio

Collapse -

- This venue does play background music in public areas.
- Music is played in the restaurant/bar area.



1



2



3



4



5



6



7



8

Eating and Drinking (Restaurant/Bar)

Collapse -

- The following information is for the restaurant/bar.
- The restaurant/bar is located on the ground floor, to the right as you enter via the hotel entrance.
- There is step-free access, via lift, to the restaurant/bar.
- Full table service is available.
- Food and/or drinks can be ordered from the service counter.
- The height of the service counter is high (110cm+).
- There is not a lowered section of the counter.
- There is not a hearing assistance system.
- There is step-free access, via lift, within the restaurant/bar.
- There is ample room for a wheelchair user to manoeuvre.
- This area does play background music.
- The type of flooring in this area is carpet and wood.
- No tables are permanently fixed.
- No chairs are permanently fixed.
- Some chairs have armrests on both sides.
- The nearest table is approximately 6m from the entrance/opening.
- The nearest table is approximately 2m from the till/counter.
- The distance between the floor and the lowest table is 66cm.
- The distance between the floor and the highest table is 71cm.
- Plastic/takeaway cups are available.
- Plastic/takeaway cutlery is not available.
- Drinking straws are available.
- Children are welcomed in the bar area.
- There are hand held menus available.
- Menus are not available in Braille.
- Menus are not available in large print.
- Picture menus are not available.
- Menus are clearly written.
- Menus are presented in contrasting colours.
- The type of food served here is a modern bar menu.

- The lighting levels are varied.
- Access to the additional seating area is via 3 medium height steps.

Comments

Collapse -

- Breakfast is served in the restaurant area and is self-service.



1



2



3



4



5



6

Lift (Restaurant Lift - Additional Seating)

Collapse -

- There is a lift for public use.
- The lift is located on the right as you enter the hotel entrance.
- The lift is clearly visible from the entrance.
- The lift is approximately 3m (3yd 10in) from the hotel entrance.
- The lift is a platform lift.
- The platform lift accesses a small level change.
- Clear signs indicating the facilities on each floor are not provided on lift lobby landings.
- There is a clear level manoeuvring space of 150cm x 150cm in front of the lift.
- Lift doors do not contrast visually with lift lobby walls.
- The external controls for the lift are not within 90cm - 110cm from the floor.
- The colour contrast between the external lift controls and the control plate is good.
- The colour contrast between the external lift control plate and the wall is good.
- The clear door width is 95cm (3ft 1in).
- The dimensions of the lift are 82cm x 120cm (2ft 8in x 3ft 11in).
- There are no separate entry and exit doors in the lift.
- There is not a mirror to aid reversing out of the lift.
- There is not a list of floor services available within the lift.
- The lift does not have a visual floor indicator.
- The lift does not have an audible announcer.
- The controls for the lift are within 90cm - 120cm from the floor.
- There is not a hearing loop system.
- The lift does not have Braille markings.
- The lift does not have tactile markings.
- The lighting levels in the lift are good.



1

2

3

4

Conference / Meeting Facilities (Priory-Helana Suite)

Collapse -

- Conference/meeting facilities are available.
- The conference/meeting facilities are located on the ground floor, opposite reception.
- There is step-free access to the conference/meeting facilities.
- The door opening width(s) is/are 75cm+ for the room(s).
- There is a hearing assistance system for the room(s).
- There are no chairs with armrests on both sides within the room(s).
- There is sufficient space for a wheelchair user to manoeuvre within the room(s).
- The lighting levels in the room(s) are good.



1



2



3



4

Conference / Meeting Facilities (Gilberd Room)

Collapse -

- Conference/meeting facilities are available.
- The conference/meeting facilities are located on the ground floor, in the corridor opposite reception.
- There is step-free access to the conference/meeting facilities.
- The door opening width(s) is/are 75cm+ for the room(s).
- There is not a hearing assistance system for the room(s).
- There is a/are chair(s) with armrests on both sides within the room(s).
- There is sufficient space for a wheelchair user to manoeuvre within the room(s).
- The lighting levels in the room(s) are good.



1



2

Accessible Room(s) (Rooms 101 and 139)

Collapse -

Accessible Room Information

Collapse -

- The details in this section relates to the accessible room(s) with a lowered bath.
- This type of accessible room is located on the ground floor.
- There is step-free access to this type of accessible room.
- All accessible rooms of this type have similar specifications.
- Guests do not need to open a door between the entrance and the room(s).
- The narrowest width of the corridor leading to the room surveyed was 150cm.

Bedroom Features

Collapse -

- The accessible room surveyed is located on the ground floor, to the left of reception.
- The accessible room surveyed at the time of the visit was Room 101.
- There is step-free access to the accessible room surveyed.
- There is numbered signage on or near the accessible room door.
- The door is key card activated.
- The fob/card reader height is 107cm.
- The width of the door is 75cm (2ft 6in).
- There are lowered spy holes available.
- The bed type is double.
- The bed height is not adjustable.
- The height of the bed is 56cm (1ft 10in).
- The measurement between the bed base and floor is 5cm (2in).
- The bed is moveable.
- The room does have an unobstructed minimum turning space of 150cm x 150cm next to the bed.
- The height of the desk is 72cm.
- The desk is not height adjustable.
- The desk knee recess has the recommended dimensions of 70cm (height) x 50cm (depth).
- The room surveyed had a desk chair with armrests, an armchair and a sofa.
- Wardrobes have been adapted to allow use from a seated position.
- Light switches are between 75cm and 120cm (4ft) from floor level.
- Electric sockets are between 40cm and 100cm (4ft) from floor level.
- The window control type(s) for the room is a/are standard lever(s).
- There is an emergency alarm in the room.
- The emergency pull cord alarm is tied up and out of reach (higher than 10cm (4") from floor).
- There is a flashing fire alarm beacon within the room.
- The type of flooring is carpet.

Ensuite Facilities

Collapse -

- The ensuite door opens by sliding.
- The door weight is heavy.
- The door is locked by a twist lock.
- The width of the door to the ensuite is 79cm (2ft 7in).
- The dimensions of the ensuite are 216cm x 170cm (7ft 1in x 5ft 7in).
- The ensuite does not have an unobstructed minimum turning space of 150cm x 150cm in front of the toilet seat.
- The ensuite has not got a non-slip floor.
- There is an emergency alarm within the ensuite.
- The emergency pull cord alarm is tied up and out of reach (higher than 10cm (4") from floor).
- There is not a flashing fire alarm beacon within the ensuite.
- Disposal facilities are available.
- There is a/are pedal waste paper bin disposal units.
- There is a mirror.
- The mirror is not placed at a lower level or at an angle for ease of use.
- There is a shelf immediately next to or behind the toilet.
- The shelf is between 90cm and 100cm.
- There is a wash basin.
- The wash basin cannot be reached from seated on the toilet.
- The wash basin is placed higher than 74cm (2ft 5in).
- The height of the wash basin is 80cm.
- There are no vertical wall-mounted grab rails at the wash basin.
- The tap type is lever.
- There is a mixer tap.
- There is not a soap dispenser.

Toilet Details

Collapse -

- The height of the toilet seat above floor level is 45cm (1ft 6in).
- The toilet has a cistern.
- There is a lateral transfer space.
- As you face the toilet pan the transfer space is on the right.
- The lateral transfer space is 90cm (2ft 11in).
- There is a flush on the transfer side.
- There is a spatula type lever flush.
- There are dropdown rails on both sides of the toilet.
- There is not a/are not wall-mounted grab rail(s) available.
- There is a toilet roll holder.
- The toilet roll holder can be reached from seated on the toilet.
- The toilet roll holder is placed higher than 100cm (3ft 3in).
- The height of the toilet roll holder is 107cm (3ft 6in).

Bath Details

Collapse -

- The ensuite has a lowered bath.
- The height of the side of the bath from floor level is 47cm (1ft 7in).
- The tap type is lever.
- There is a mixer tap.
- There is a shower over the bath.
- The shower head height is fixed.
- The shower control type is twist/turn.
- There is a/are wall-mounted grab rail(s) available for the bath.

Colour Contrast and Lighting

Collapse -

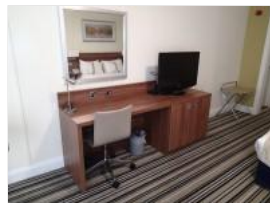
- The colour contrast between the external hotel room door and wall is poor.
- The colour contrast between the internal hotel room door and wall is poor.
- The colour contrast between the hotel room walls and floor is good.
- The colour contrast between the external ensuite door and wall is good.
- The colour contrast between the internal ensuite door and wall is good.
- The colour contrast between the ensuite walls and floor is fair.
- The colour contrast between the drop down rail(s) and wall is fair.
- The colour contrast between the bath wall-mounted grab rails and wall is poor.
- The toilet seat colour contrast is poor.
- The lighting levels in the room are adjustable.
- The lighting levels in the ensuite are good.



1



2



3



4



5



6



7

Standard Room(s) (Room 118)

Collapse -

Bedroom Features

Collapse -

- The room surveyed is located on the ground floor, to the left of reception.
- The room surveyed at the time of the visit was Room 118.
- There is step-free access to the room surveyed.
- There is numbered signage on or near the room door.
- The width of the door is 75cm (2ft 6in).
- The bed type is double.
- The height of the bed is 55cm (1ft 10in).
- The measurement between the bed base and floor is 12cm (5in).
- Light switches are not within 120cm (3ft 11in) from floor level.
- There is not an emergency alarm in the room.
- There is not a flashing fire alarm beacon within the room.
- The type of facilities within the ensuite include; a toilet, a wash basin and a shower.
- The ensuite door opens inwards.
- The width of the door to the ensuite is 67cm (2ft 2in).
- There is not an emergency alarm within the ensuite.
- There is not a flashing fire alarm beacon within the ensuite.
- The tap type is lever.
- There is a mixer tap.

Colour Contrast and Lighting

Collapse -

- The colour contrast between the external hotel room door and wall is good.
- The colour contrast between the internal hotel room door and wall is good.
- The colour contrast between the hotel room walls and floor is good.
- The colour contrast between the external ensuite door and wall is good.
- The colour contrast between the internal ensuite door and wall is poor.
- The colour contrast between the walls and floor in the ensuite is poor.
- The lighting levels in the room are adjustable.
- The lighting levels in the ensuite are good.

Comments

Collapse -

- There is a deep step to access the shower.



1



2



3



4



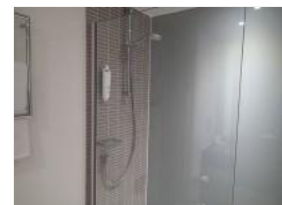
5



6



7



8

Standard Room(s) (Executive Room 132)

Collapse -

Bedroom Features

Collapse -

- The room surveyed is located on the ground floor, to the left of reception.
- The room surveyed at the time of the visit was Room 132.
- There is step-free access to the room surveyed.
- There is written and numbered signage on or near the room door.
- The width of the door is 76cm (2ft 6in).
- The bed type is double.
- The height of the bed is 58cm (1ft 11in).
- The measurement between the bed base and floor is 12cm (5in).
- Light switches are not within 120cm (3ft 11in) from floor level.
- There is not an emergency alarm in the room.
- There is not a flashing fire alarm beacon within the room.
- The type of facilities within the ensuite include; a toilet, a wash basin and a shower.
- The ensuite door opens inwards.
- The width of the door to the ensuite is 67cm (2ft 2in).
- There is not an emergency alarm within the ensuite.
- There is not a flashing fire alarm beacon within the ensuite.
- The tap type is lever.
- There is a mixer tap.

Colour Contrast and Lighting

Collapse -

- The colour contrast between the external hotel room door and wall is good.
- The colour contrast between the internal hotel room door and wall is poor.
- The colour contrast between the hotel room walls and floor is good.
- The colour contrast between the external ensuite door and wall is good.
- The colour contrast between the internal ensuite door and wall is poor.
- The colour contrast between the walls and floor in the ensuite is poor.
- The lighting levels in the room are adjustable.
- The lighting levels in the ensuite are good.

Comments

Collapse -

- There is a deep step to access the shower.



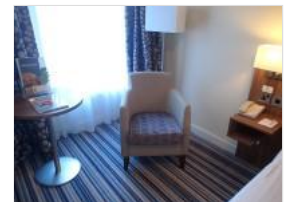
1



2



3



4



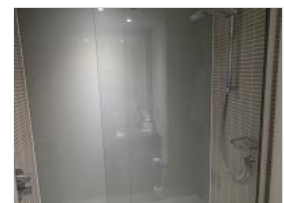
5



6



7



8

Other Floors

Collapse -

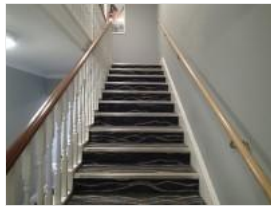
Stairs

Collapse -

- Stairs can be used to access other floors.
- The stairs are for public use.
- The stairs are located off the main hotel corridor.
- The stairs are approximately 42m from the hotel entrance.
- Signs indicating the location of the stairs are not available from the entrance.
- There are manual, heavy, double doors to enter and exit the stairwell on all floors.
- The floors which are accessible by stairs are G and 1.
- There are 15+ steps between floors.
- The height of the step(s) is/are between the recommended 15cm and 18cm.
- The going of the step(s) is/are between the recommended 30cm and 45cm.
- The steps are clearly marked.
- There is a/are handrail(s) at the step(s).
- The steps have a handrail on both sides.
- Handrails are at the recommended height (90cm-100cm).
- Handrails do cover the flight of stairs throughout its length.
- Handrails are easy to grip.
- Handrails do extend horizontally beyond the first and last steps.
- There is a landing.
- Clear signs indicating the facilities on each floor are not provided on landings.
- The lighting levels at the steps are good.



1



2



3

Accessible Toilet(s)

Collapse -

- There is an/are accessible toilet(s) for public use.

Location and Access

Collapse -

- The accessible toilet surveyed is not for the sole use of disabled people.
- This accessible toilet is located on the ground floor, in the corridor to the left of reception.
- This accessible toilet is approximately 32m (34yd 2ft) from the hotel entrance.
- There is step-free access to the accessible toilet.

Features and Dimensions

Collapse -

- This is a shared toilet.
- A key is not required for the accessible toilet.
- There is pictorial signage on or near the toilet door.
- The door opens outwards.
- The door is heavy.
- The door is locked by a twist lock.

- The width of the accessible toilet door is 87cm (2ft 10in).
- The dimensions of the accessible toilet are 152cm x 215cm (4ft 12in x 7ft 1in).
- The accessible toilet does not have an unobstructed minimum turning space of 150cm x 150cm.
- The toilet has not got a non-slip floor.
- The height of the light switch/pull cord is 80cm from floor level.
- There is a lateral transfer space.
- As you face the toilet pan the transfer space is on the left.
- The lateral transfer space is 84cm (2ft 9in).
- There is a flush, however it is not on the transfer side.
- There is not a spatula type lever flush.
- There is a dropdown rail on the transfer side.
- There is an emergency alarm.
- The emergency pull cord alarm is not fully functional.
- The alarm was out of reach (higher than 10cm (4") from floor) when surveyed.
- There is not a flashing fire alarm beacon within the toilet.
- Disposal facilities are available in the toilet.
- There is a/are female sanitary, non-infectious waste and waste paper pedal bin disposal units.
- There is not a/are not coat hook(s).

Position of Fixtures

Collapse -

- There is a/are wall-mounted grab rail(s) available.
- As you face the toilet the wall-mounted grab rail(s) is/are on the right.
- There is not a vertical wall-mounted grab rail on the transfer side.
- There is a horizontal wall-mounted grab rail on the opposite side of the seat to the transfer space.
- There is a mirror.
- The mirror is not placed at a lower level or at an angle for ease of use.
- There is not a shelf next to the toilet.
- The toilet has a cistern.
- The height of the toilet seat above floor level is 44cm (1ft 5in).
- There is a toilet roll holder.
- The toilet roll holder can be reached from seated on the toilet.
- The toilet roll holder is placed higher than 100cm (3ft 3in).
- The height of the toilet roll holder is 113cm (3ft 8in).
- There is a wash basin.
- The wash basin can be reached from seated on the toilet.
- The wash basin is not placed higher than 74cm (2ft 5in).
- There are vertical wall-mounted grab rails on both sides of the wash basin.
- The wash basin tap type is lever.
- There is a mixer tap.
- There is a soap dispenser.
- The soap dispenser can be reached from seated on the toilet.
- The height of the soap dispenser is 104cm.
- There is a towel dispenser.
- The towel dispenser cannot be reached from seated on the toilet.
- The towel dispenser is placed higher than 100cm (3ft 3in).
- The height of the towel dispenser is 123cm (4ft).
- There is a hand dryer.
- The hand dryer cannot be reached from seated on the toilet.
- The hand dryer is not placed higher than 100cm (3ft 3in).

Colour Contrast and Lighting

Collapse -

- The contrast between the external door and wall is good.

- The contrast between the internal door and wall is poor.
- The contrast between the dropdown rail(s) and wall is good.
- The contrast between the wall-mounted grab rail(s) and wall is good.
- The toilet seat colour contrast is poor.
- The contrast between the walls and floor is good.
- The lighting levels are good.

Baby Changing Facilities

Collapse -

- Baby changing facilities are located within the accessible toilet.
- The baby change table is not set against the wall, permanently fixed at 75cm from the floor.
- The baby change table is not height adjustable.
- The height of the baby change table once extended is 97cm (3ft 2in).



1



2



3

Standard Toilet(s)

Collapse -

- Standard toilet facilities are available.

Access to Standard Female Toilet(s)

Collapse -

- The female toilet facilities that were surveyed are located on the ground floor, off the corridor to the left of reception.
- The female toilet(s) is/are approximately 25m (27yd 1ft) from the hotel entrance.
- There is step-free access to the female toilet(s).
- There is pictorial signage on or near the toilet door.
- An ambulant toilet with wall-mounted grab rails is available.
- There are horizontal grab rails on both sides of the seat.
- The wash basin tap type is twist/turn.
- There is not a flashing fire alarm beacon within the toilets.
- Lighting levels are good.

Access to Standard Male Toilet(s)

Collapse -

- The male toilet facilities that were surveyed are located on the ground floor, off the corridor to the left of reception.
- The male toilet(s) is/are approximately 35m (38yd 10in) from the hotel entrance.
- There is step-free access to the male toilet(s).
- There is pictorial signage on or near the toilet door.
- An ambulant toilet with wall-mounted grab rails is available.
- There are horizontal grab rails on both sides of the seat.
- The wash basin tap type is twist/turn.
- There is not a flashing fire alarm beacon within the toilets.
- Lighting levels are good.